

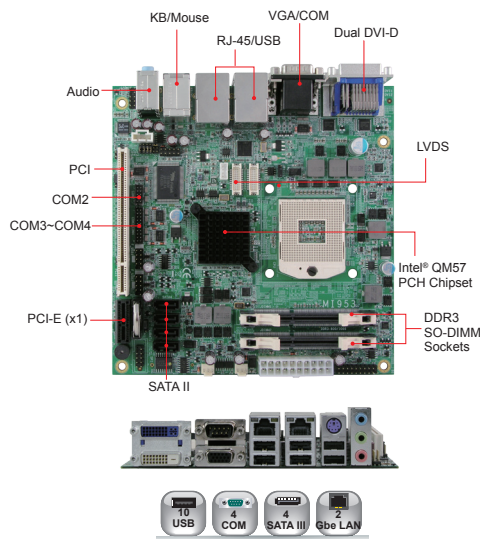
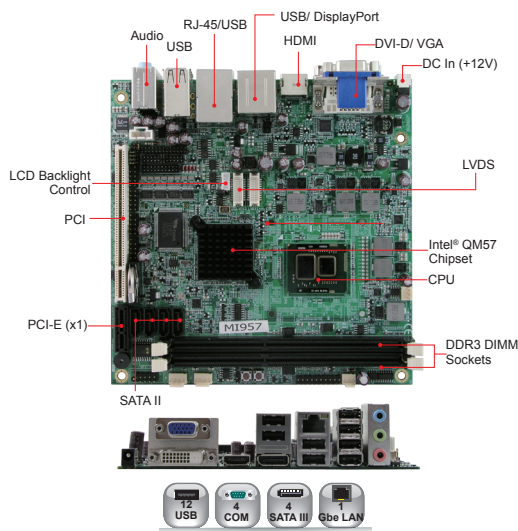
iBASE Mini-ITX Motherboard / Mini-ITX Motherboard

MI957

MI953

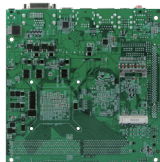
BGA1288 Intel® Core™ i7/i3 Mini-ITX Motherboard w/ Intel® QM57 PCH

rPGA988 Intel® Core™ i7/i5/i3 / Celeron® Mini-ITX Motherboard w/ Intel® QM57/HM55 PCH



Features

- Onboard Intel® Core™ i7-610E / i3-330E processor, up to 2.53GHz
- 2x DDR3 DIMM, Max. 8GB, supports ECC
- Supports CRT, DVI-D, HDMI, LVDS and DisplayPort
- Intel® 82577LM Gigabit PHY
- 4x SATA II (RAID 0,1), 12x USB 2.0, 4x COM
- 1x Mini PCI-E, 1x PCI-E(x1), 1x PCI



Specifications

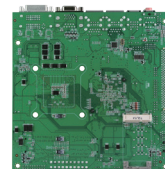
CPU	Intel® Core™ i7-610E 2.53GHz Intel® Core™ i3-330E 2.16GHz
System Memory	2x DDR3 DIMM, 800/1066MHz, Max. 8GB, supports ECC
System Chipset	Intel® QM57 PCH
BIOS	AMI
Watchdog Timer	256 levels
SSD	N/A
H/W Monitor	Yes
Expansion Slots	1x PCI, 1x PCI-E (x1), 1x Mini PCI-E
VGA Controller	Intel® Core™ i7-610E / i3-330E integrated
VGA Memory	Max. shared memory - 352MB
Display Interface	Onboard CRT, DVI-D & 24-bit single channel LVDS, HDMI, DisplayPort
LAN Controller	Intel® 82577LM Gigabit LAN
Connector	RJ-45 on board
I/O Chipset	Fintek F81865-I 1x KB, 1x mouse, 1x LPT, 3x RS-232, 1x RS-232/422/485, 4x SATA II
USB	4 ports on board Pin header for 8 ports (USB 2.0)
Audio	Intel® QM57 built-in audio w/ Realtek ALC888 codec for 5.1CH
Others	Digital I/O (4-in/4-out), +12V DC In
Dimensions	170mm x 170mm (6.7" x 6.7")
Max. Power Requirement	Intel® Core™ i5-540 2.52MHz w/ 2x 1GB DDR3-1333 +12V: 4.24A
Operating Temperature	0°C~60°C (32°F~140°F)
Storage Temperature	-20°C~80°C (-4°F~176°F)
Relative Humidity	90% (non-condensing @60°C)

Ordering Information

MI957-i3	Intel® Core™ i3-330E (2.13GHz) QM57 MiniITX motherboard w/ VGA, DVI, HDMI, DP and Gigabit LAN
MI957-i7	Intel® Core™ i7-610E (2.53GHz) QM57 MiniITX motherboard w/ VGA, DVI, HDMI, DP and Gigabit LAN, iAMT 6.0

Features

- Supports Intel® Core™ i7/i5/i3/ Celeron® 32nm processors
- 2x DDR3 SO-DIMM (w/o ECC), Max. 8GB
- Supports CRT, LVDS and dual DVI-D (dual display)
- 2x Gigabit LAN
- 4x SATA II, 10x USB 2.0, 4x COM
- 1x Mini PCI-E, 1x PCI-E(x1), 1x PCI
- RAID, Optional AMT



Specifications

CPU	rPGA988 for Intel® Core™ i7/i5/i3/ Celeron® processors
System Memory	2x DDR3 SO-DIMM, Max. 8GB
System Chipset	Intel® QM57/HM55 PCH
BIOS	AMI
Watchdog Timer	256 levels
SSD	N/A
H/W Monitor	Yes
Expansion Slots	1x PCI, 1x PCI-E (x1), 1x Mini PCI-E (x1)
VGA Controller	Intel® Core™ i7 / i5 / i3 / Celeron® integrated
VGA Memory	Max. shared memory - 352MB
Display Interface	Supports CRT, 2x DVI-D & 24-bit dual channel LVDS
LAN Controller	Intel® 82577LM Gigabit LAN Intel® 82574L PCI-E Gigabit LAN
Connector	Dual RJ-45 on board
I/O Chipset	Fintek F81865-I 1x keyboard, 1x mouse, 3x RS232, 1x RS-232/422/485, 4x SATA II (3.0Gb/sec.)
USB	6 ports on board Pin header for 4 ports (USB 2.0)
Audio	Built-in HD audio w/ Realtek ALC892 codec for 7.1CH
Others	Digital I/O (4-in/4-out)
Dimensions	170mm x 170mm (6.7" x 6.7")
Max. Power Requirement	Intel® Core™ i5-520M 2.4GHz w/ 2GB DDR3-1066 +12V: 2.03A +5V: 4.53A +3.3V: 1.14A
Operating Temperature	0°C~60°C (32°F~140°F)
Storage Temperature	-20°C~80°C (-4°F~176°F)
Relative Humidity	90% (non-condensing @60°C)

Ordering Information

MI953F	rPGA988 QM57 Mini-ITX motherboard w/ VGA, dual DVI & dual Gigabit LAN, RAID, EuP/ErP compliant
MI953AF	rPGA988 QM57 Mini-ITX motherboard w/ VGA, dual DVI & dual Gigabit LAN, AMT (6.0), RAID
MI953	rPGA988 HM55 Mini-ITX motherboard w/ VGA, dual DVI & dual Gigabit LAN, EuP/ErP compliant

Remarks: 1. Specifications are subject to change without prior notice. 2. ODM/OEM is available. 3. For user's manual & datasheet download, visit www.ibase.com.tw.